

31.36.12.2

CODE NUMBER

3 Dec. 1975

DATE

E 1/4 Cor. - Sec. 12, T.31S., R.36E. Fd. 1" I.P. w/std. br. cap bent over until cap  
faced downward; bse. of pipe was 0.05'W & 0.09'S of pos. per L.A. City Water Dept.  
F.B. 3447-65. Straightened pipe & reset in conc. correcting position, up 6"

DESCRIPTION OF CORNER *Cap markings: USGL 0**1/4 S 12 1/2*

DISTANCE

DIRECTION &amp; DESCRIPTION OF OBJECT TIED TO

1937

28.58S - Set 2" I.P. w/galv. cap in 1'sq. conc. mon. at intersection

DISTANCE

DIRECTION &amp; DESCRIPTION OF OBJECT TIED TO

of & 2nd L.A. Aqueduct & the E. line of Sec. 12, per L.A.W. Dept.  
F.B. 3447, p. 76.

DISTANCE

DIRECTION &amp; DESCRIPTION OF OBJECT TIED TO

DISTANCE

DIRECTION &amp; DESCRIPTION OF OBJECT TIED TO

X

STATE COORDINATE

Y

STATE COORDINATE

Z

ELEVATION

Lawrence V. Vadasz, L.S. 3571, L.A. Dept. of Water & Power

NAME OF SURVEYOR OR GOVERNMENTAL AGENCY

31-36-25-1 / NE COR. 25-31/36

6-26-85

CONF. NUMBER

DATE

ZONE

ELEVATION

NORTHINGS (Y)

623,039.5

EASTINGS (X)

1,982,467.5

SKETCH: (Include reference tie or witness points, remarks and topo of area)

PHOTO INFO

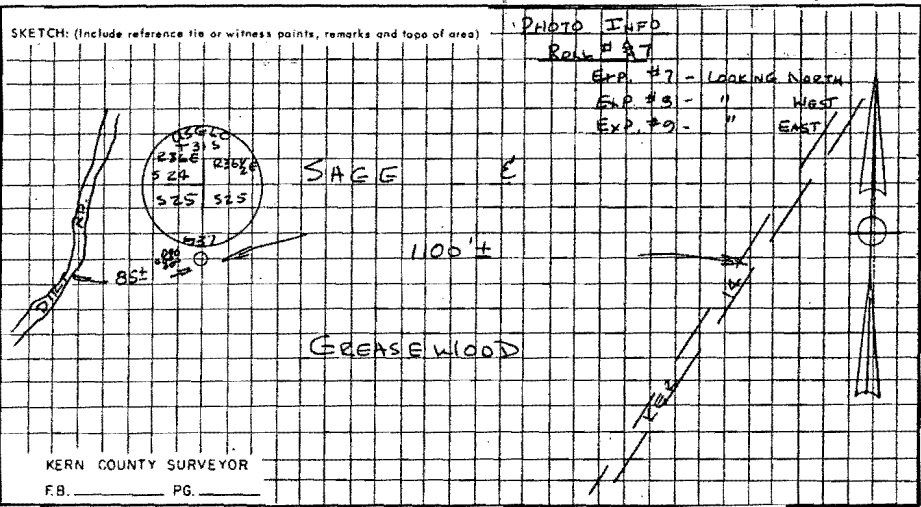
Roll # AT

Exp. #7 - LOOKING NORTH

Exp. #8 - " WEST

Exp. #9 - " EAST

DIST



KERN COUNTY SURVEYOR

F.B. PG.

SURVEYOR'S CERTIFICATE

THIS CORNER RECORD WAS PREPARED BY ME OR UNDER MY DIRECTION IN CONFORMANCE WITH THE LAND SURVEYORS ACT ON JUNE 26, 1985

SIGNED: R. L. Clark

L.S. or R.C.E. No. Chief of Partys - California

SEAL

COUNTY SURVEYOR'S CERTIFICATE

THIS CORNER RECORD WAS RECEIVED 7/19 1985 AND EXAMINED AND FILED 7/19 1985

BY: W. D. L.

TITLE: DEPUTY COUNTY SURVEYOR

DOCUMENT No. \_\_\_\_\_

STATEMENT ON BACK OF SHEET

REC-1048

NAM

Pub

31-36-25-2 / E 1/4 COR. 25-31/36

6-26-85

CODE NUMBER

N.A.T.F.

ZONE

ELEVATION

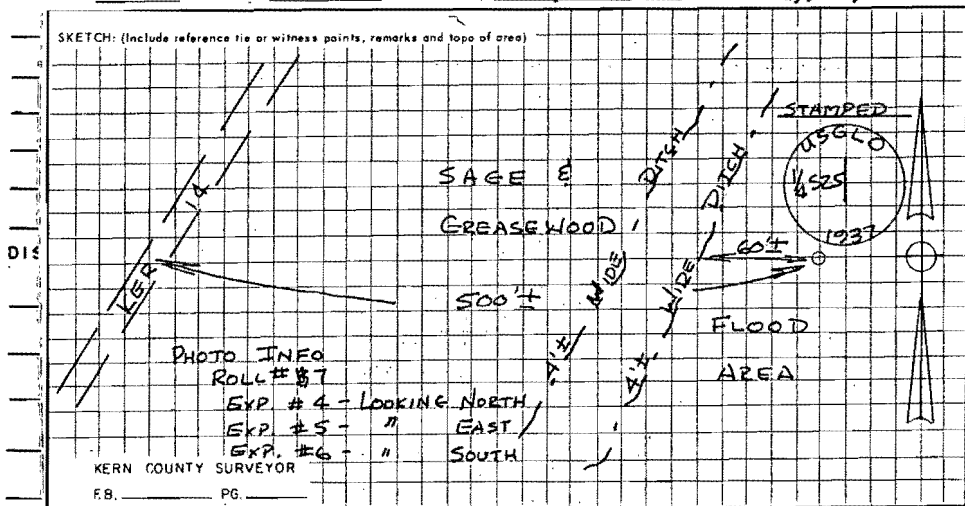
NORTHINGS (Y)

620,374.8

EASTINGS (X)

1,982,457.2

SKETCH: (Include reference tie or witness points, remarks and topo of area)



SURVEYOR'S CERTIFICATE

THIS CORNER RECORD WAS PREPARED BY ME OR UNDER MY DIRECTION IN CONFORMANCE WITH THE LAND SURVEYORS ACT ON June 26, 1985

SIGNED: R. R. Clark

L.S. or R.C.E. No.: Chief of Party - Caltrans

SEAL

COUNTY SURVEYOR'S CERTIFICATE

THIS CORNER RECORD WAS RECEIVED 7/19 1985 AND EXAMINED AND FILED 7/19 1985

BY: W. J. [Signature]

TITLE: DEPUTY COUNTY SURVEYOR

DOCUMENT No. \_\_\_\_\_

STATEMENT ON BACK OF SHEET

YES  NO

NAN

Pub

31-36-35-2 / E 1/4 Cor. 35-31/36

6-26-85

CODE NUMBER

DATE

ZONE

ELEVATION

NORTHINGS (Y)

618,251.1

EASTINGS (X)

1,977,47.3

SKETCH: (Include reference tie or witness points, remarks and tops of area)

WASH OUT AREA  
DIRT RD.

STAMPED

LEG

YES YES

2 1/2 SD

DIRT RD.

FLOOR

KERN 119

PHOTO INFO

ROLL # 6

EXP # 10 - LOOKING NORTH  
EXP # 11 - " WEST  
EXP # 12 - " SOUTH

KERN COUNTY SURVEYOR

FB. \_\_\_\_\_ PG. \_\_\_\_\_

SURVEYOR'S CERTIFICATE

THIS CORNER RECORD WAS PREPARED BY ME OR UNDER MY DIRECTION IN CONFORMANCE WITH THE LAND SURVEYORS ACT

ON June 26, 1985

SIGNED: R. L. Coal

L.S. or R.C.E. No.: Christ of Party - Caltrans

SEAL

COUNTY SURVEYOR'S CERTIFICATE

THIS CORNER RECORD WAS RECEIVED AND EXAMINED AND FILED

7/19 1985

BY: W. J. W.

TITLE: DEPUTY COUNTY SURVEYOR

DOCUMENT No. \_\_\_\_\_

STATEMENT ON BACK OF SHEET

YES  NO

31-36-35-5 / SEC. 35-31/36

6-26-85

CODE NUMBER

ZONE \_\_\_\_\_ ELEVATION \_\_\_\_\_ NORTHINGS (Y) 612,353.1 EASTINGS (X) 1,977,070.8

SKETCH: (Include reference tie or witness points, remarks and topo of area)

PHOTO INFO

ROLL # 31

EXP #1 - LOOKING NORTH

EXP #2 - LOOKING WEST

EXP #3 - LOOKING SOUTH

STAMPED

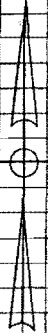


450' SAGE

880'

GREASEWOOD

WELL



KERN COUNTY SURVEYOR  
F.B. \_\_\_\_\_ PG. \_\_\_\_\_

SURVEYOR'S CERTIFICATE

THIS CORNER RECORD WAS PREPARED BY ME OR UNDER MY DIRECTION IN CONFORMANCE WITH THE LAND SURVEYORS ACT ON JUNE 26, 1985

SIGNED: R. L. Clark

L.S. or R.C.E. No.: Chief of Party - Caltrans

SEAL

COUNTY SURVEYOR'S CERTIFICATE

THIS CORNER RECORD WAS RECEIVED AND EXAMINED AND FILED 7/19 1985

BY: W. D. L.

TITLE: DEPUTY COUNTY SURVEYOR

DOCUMENT No. \_\_\_\_\_

STATEMENT ON BACK OF SHEET

YES  NO

31-36-35-6 / S1/4 Cor. 35-31/36

6-26-85

CODE NIIMRFR

ZONE

ELEVATION

NORTHINGS (Y)

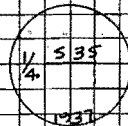
612,361.8

EASTINGS (X)

1,974,477.7

SKETCH: (Include reference tie or witness points, remarks and top of area)

STAMPED



DIS

Photo INFO

Roll #6

- Exp #7 - LOOKING NORTH
- Exp #8 - " WEST
- Exp #9 - " SOUTH EAST

KERN COUNTY SURVEYOR

F.B. \_\_\_\_\_ PG. \_\_\_\_\_

SURVEYOR'S CERTIFICATE

THIS CORNER RECORD WAS PREPARED BY ME OR UNDER MY DIRECTION IN CONFORMANCE WITH THE LAND SURVEYORS ACT ON June 26, 1985

SIGNED: R. L. Clark

L.S. or R.C.E. No.: Chief of Party - Caltrans

SEAL

COUNTY SURVEYOR'S CERTIFICATE

THIS CORNER RECORD WAS RECEIVED 7/19 19 85 AND EXAMINED AND FILED 7/19 19 85

BY: W. D. [Signature]

TITLE: DEPUTY COUNTY SURVEYOR

DOCUMENT No. \_\_\_\_\_

STATEMENT ON BACK OF SHEET

YES  NO

NAN  
Put

31-36-36-2 / E 1/4 Cor. 36-31/36

6-26-85

CODE NUMBER

ZONE

ELEVATION

NORTHINGS (Y)

~~615, 048.2~~

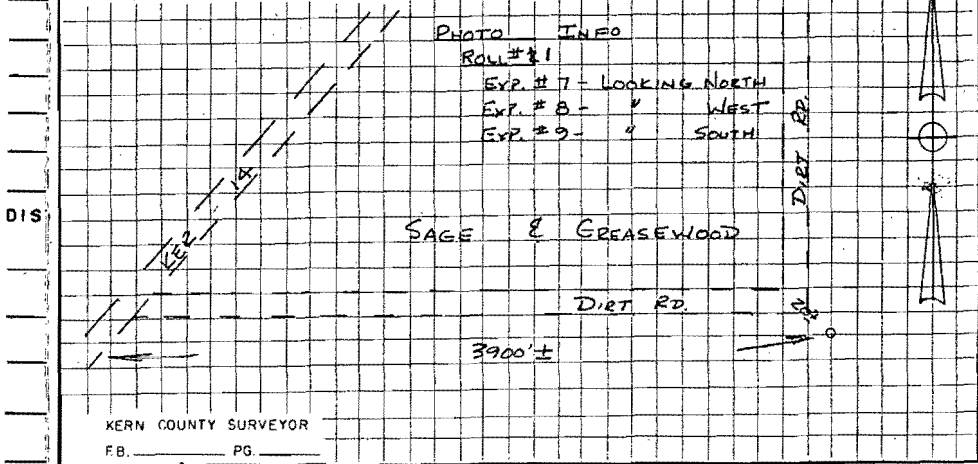
EASTINGS (X)

~~1992, 972.8~~

615, 048.2

1992, 972.8

SKETCH: (Include reference tie or witness points, remarks and topo of area)



KERN COUNTY SURVEYOR

F.B. \_\_\_\_\_ PG. \_\_\_\_\_

SURVEYOR'S CERTIFICATE

THIS CORNER RECORD WAS PREPARED BY ME OR UNDER MY DIRECTION IN CONFORMANCE WITH THE LAND SURVEYORS ACT ON June 26, 1985

SIGNED: R. L. Clark

L.S. or R.C.E. No.: Chief of Party - Caltrans

SEAL

COUNTY SURVEYOR'S CERTIFICATE

THIS CORNER RECORD WAS RECEIVED AND EXAMINED AND FILED 7/19 1985

BY: W. D. Clark

TITLE: DEPUTY COUNTY SURVEYOR

DOCUMENT No. \_\_\_\_\_

STATEMENT ON BACK OF SHEET

YES  NO

NAM

Pub

31-36-36-4 / N<sup>1</sup>/<sub>4</sub> Cor. 36-31/36

6-26-85

CORNER NUMBER

ZONE

ELEVATION

NORTHINGS (Y)

617,720.8

EASTINGS (X)

1,979,806.8

SKETCH: (Include reference tie or witness points, remarks and topo of area)

STAMPED

05610

V 5-25

4 5-36

937

4"x4"x4" W.P. 2

350'±

DIRT

RD.

PHOTO INFO

Roll # 2

Exp # 10 - LOOKING NORTH

Exp # 11 - " WEST

Exp # 12 - " SOUTH

KERN COUNTY SURVEYOR

F.B. \_\_\_\_\_ PG. \_\_\_\_\_

## SURVEYOR'S CERTIFICATE

THIS CORNER RECORD WAS PREPARED BY ME OR UNDER MY DIRECTION IN CONFORMANCE WITH THE LAND SURVEYORS ACT ON June 26, 1985

SIGNED: R. L. ClarkL.S. or R.C.E. No.: Christ of Purty - Coltrains

SEAL

## COUNTY SURVEYOR'S CERTIFICATE

THIS CORNER RECORD WAS RECEIVED 7/19 1985 AND EXAMINED AND FILED 7/19 1985

BY: W. D. [Signature]TITLE: DEPUTY COUNTY SURVEYOR

DOCUMENT No. \_\_\_\_\_

STATEMENT ON BACK OF SHEET

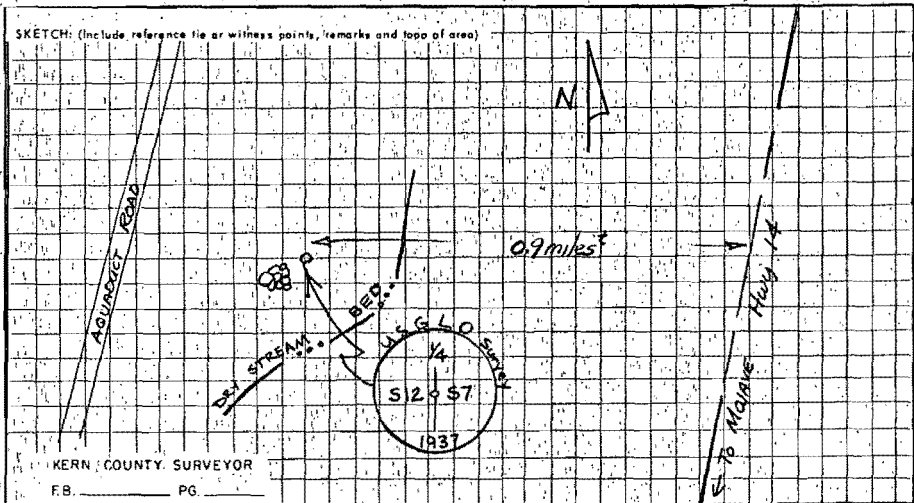
YES  NO

31-316-12-2 / E 1/4 COR. 12 31/36

JAN. 28 1987

CODE NUMBER

SKETCH: (Include reference file or witness points, remarks and topo of area)



KERN COUNTY SURVEYOR  
F.B. \_\_\_\_\_ PG \_\_\_\_\_

SURVEYOR'S CERTIFICATE

THIS CORNER RECORD WAS PREPARED BY ME OR UNDER MY DIRECTION IN CONFORMANCE WITH THE LAND SURVEYORS ACT ON 23 Jan 19 87

SIGNED: MMW R. Winstead

L.S. or R.C.E. No.: Caltrans P.C.

COUNTY SURVEYOR'S CERTIFICATE

THIS CORNER RECORD WAS RECEIVED AND EXAMINED AND FILED 2/23 19 87

BY: W. A. [Signature]

TITLE: DEPUTY COUNTY SURVEYOR

DOCUMENT No. \_\_\_\_\_

STATEMENT ON BACK OF SHEET

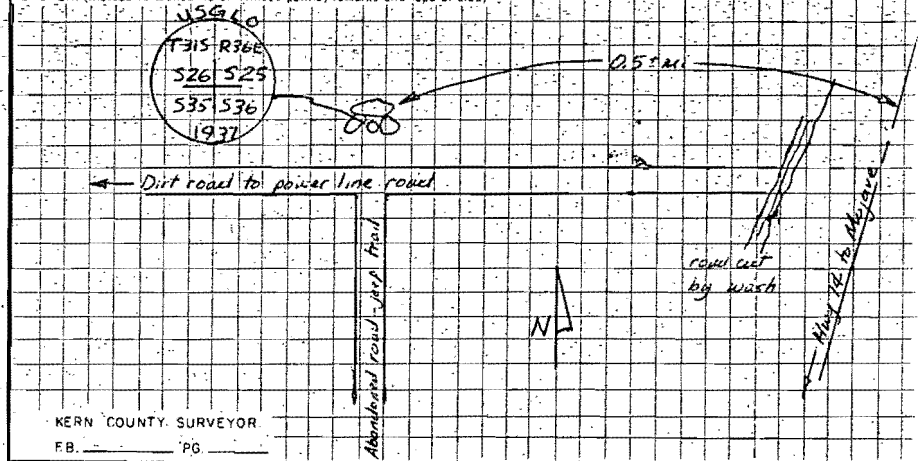
31-36-35-1 / NE COR 35

DEC. 11, 1986

NUMBER

DATE

SKETCH: (Include reference ties or witness points, remarks and topo of area)



KERN COUNTY SURVEYOR

FB. \_\_\_\_\_ PG. \_\_\_\_\_

## SURVEYOR'S CERTIFICATE

THIS CORNER RECORD WAS PREPARED BY ME OR UNDER MY  
DIRECTION IN CONFORMANCE WITH THE LAND SURVEYORS ACT  
ON 11 Dec 1986

SIGNED: W. R. [Signature]L.S. or R.C.E. No.: Caltrans P.C.

SEAL

## COUNTY SURVEYOR'S CERTIFICATE

THIS CORNER RECORD WAS RECEIVED  
AND EXAMINED AND FILED 2/18 2/18 1987

BY: W. R. [Signature]TITLE: DEPUTY COUNTY SURVEYOR

DOCUMENT No. \_\_\_\_\_

STATEMENT ON BACK OF SHEET

KERN COUNTY