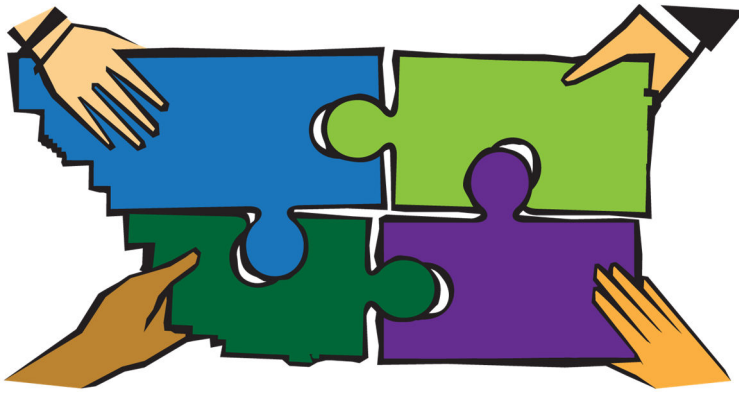


Kern County General Plan Update



The County of Kern invites you to attend workshops to provide you with information regarding the General Plan Update process. Your participation will help identify community needs and priorities. **Please join us and share your vision of the future of Kern County and your concerns.**

We are reaching out to you, private individual, business owners, organizations, agencies, and interested stakeholders to provide input and share thoughts and visions for Kern County's future.

If you would like to receive updates and information throughout the process visit our website:

pcd.kerndsa.com/general-plan-update

Workshop

Board of Supervisor's Chambers
1115 Truxtun Ave, 1st Floor
Doors Open at 6:00 p.m.
Workshop Begins: 7:00 p.m.

March 23, 2017

Land Use, Continued
Circulation
Open Space
Conservation

April 27, 2017

Water
Housing

A Spanish interpreter will be available
at the Workshops

Contact the GPU Team

GeneralPlanUpdate@co.kern.ca.us

Kern County Planning &
Natural Resources Department
2700 M Street, Suite 100
Bakersfield, CA 93301